

# Blitzz Super G Wireless

108Mbps 802.11g Wireless LAN Notebook Adaptor

## Installation Guide

Model: BWP712



## Contents of Package



- BWP712 Wireless LAN Notebook Network Adaptor
- Quick Installation Guide
- Software & Utility CD

## Install Software First

Before you plug-in your BWP712 adapter, please insert the software CD came with package first.

- CD will autorun if enabled on your computer
- Click **Install Driver and Utility** and run the file. You can also go to CD Drive, find the **WLSetup.exe** and double-click to start setup.
- Follow the steps in setup screen.
- Program will automatically close.

• **When finished, RESTART YOUR COMPUTER.**



## Hardware Installation

- Windows 98**
- Windows ME**

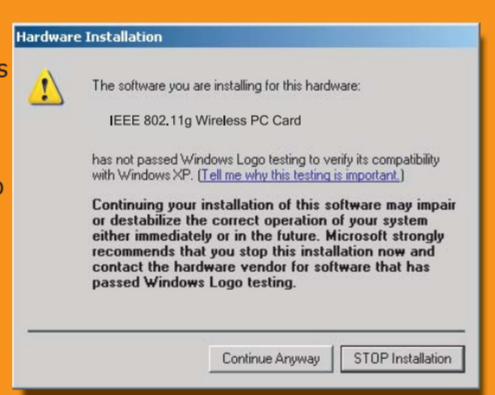
After the software installation and **restart your computer**, insert the BWP712 Wireless LAN Notebook Card into an available PCMCIA slot on your computer. The system might ask you to insert Windows 98/ME CD. Please prepare and insert your Windows CD when asked.

- Windows 2000**
- Windows XP**

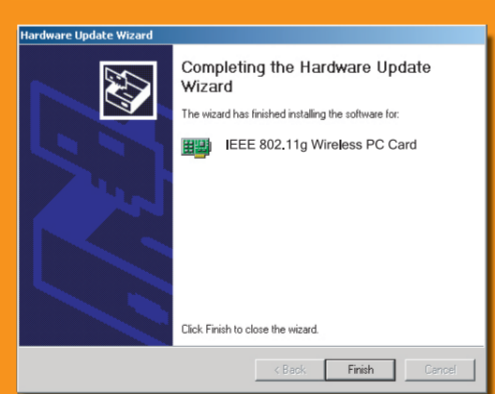
1. Insert the BWP712 Wireless LAN Notebook Card into an available PCMCIA slot on your computer.
2. Windows XP will automatically detect the new hardware. Click **Next**. The driver will be installed automatically.



3. BWP712 Driver is constantly updated for its best performance. This means sometimes you will see this dialog. Click **Continue Anyway** to go on with your installation.



4. Click **Finish** to complete the software installation.



## Wireless LAN Utility

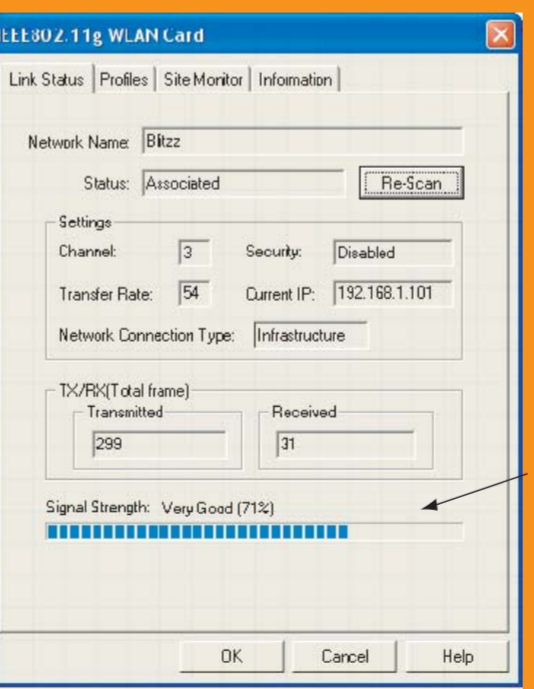
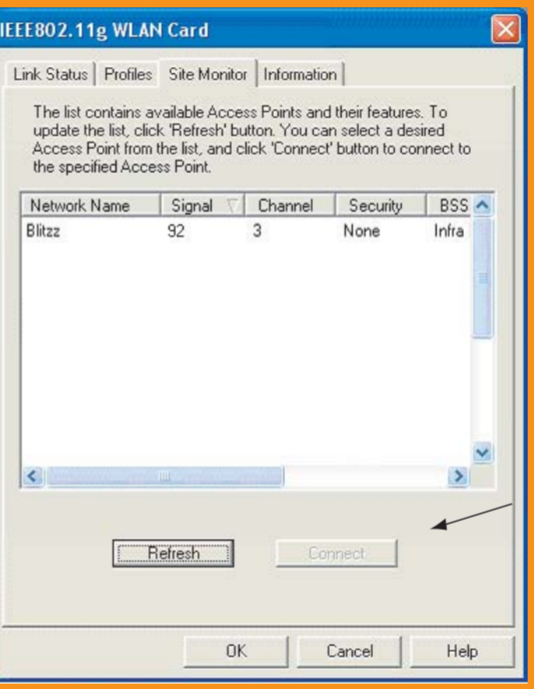
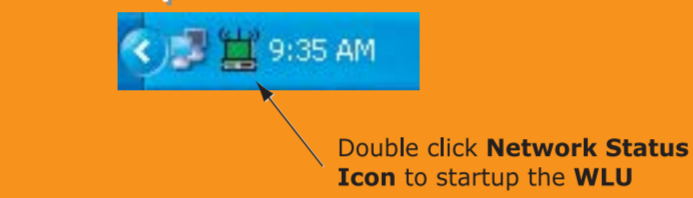
- Windows XP**

The Windows XP Wireless LAN Utility is the default utility. When you install the Blitzz Utility, it takes control automatically. You can change it back if you want. Please go next section for details.

### Network Status Icon

- Green indicates a link with wireless AP.
- Red indicates no wireless link

### Start Up WLU



Go to the **Site Monitor** Tab to refresh and press **Connect** to enter after you have selected your Wireless Network.

You can monitor the Link Details and **Signal Strength** right away if you have an AP and it is properly installed.



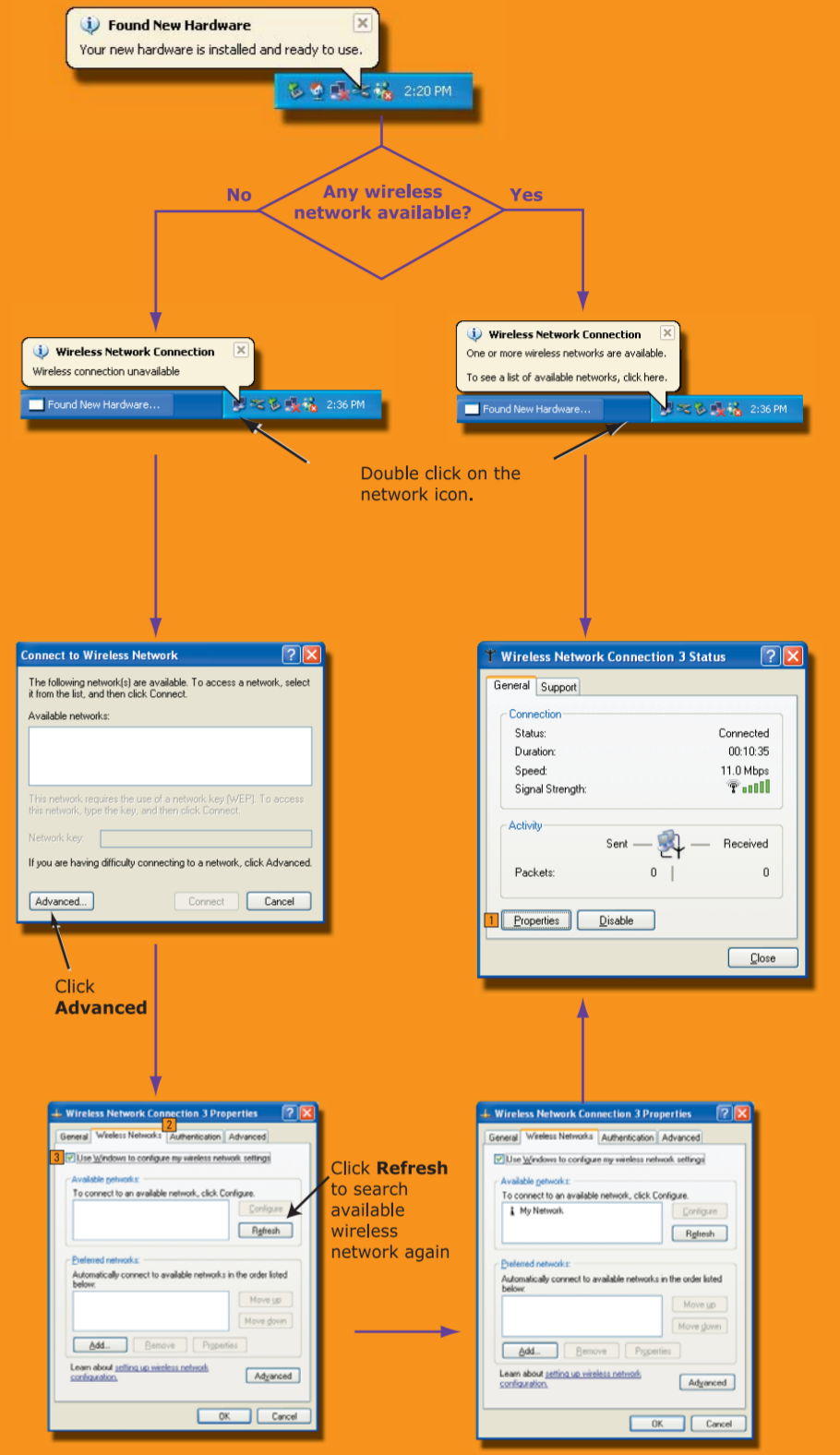
### 108Mbps Super G Mode:

To achieve 108Mbps Super G Mode, the router (BWA711) must support this option and be manually be set to this operating mode in the router's Wireless Setup screen.

When you connect the BWP712 Wireless Adapter to the network (always on Channel 6) the adapter will automatically detect the Super G Technology and give you blazing 108Mbps performance.

## Microsoft Wireless LAN Utility for Windows XP

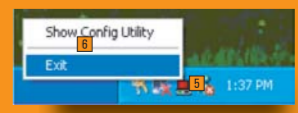
After you install your BWP712 Wireless Notebook Card, Windows XP will automatically recognize it and search for available AP(Access Point). BWP712 is default configured to work in this kind of network. To make your wireless connection, please properly install your AP and follow the steps below.



## Switch Between WLUs

The Windows XP has built-in Wireless LAN Utility. You can either use the built-in WLU (recommended) or the Blitzz WLU comes with your BWP712. To switch from Microsoft WLU, double click on the network icon, then click **Properties**, the **Wireless Network Connection Properties** will show up. Click on **Wireless Networks** tab and un-check **Use Windows to configure my wireless network settings**. Click **OK** to change to Blitzz WLU.

To switch back from Blitzz WLU to Microsoft WLU, please right click the network status icon then click **Exit**. Open your advanced Wireless Connection Properties to doublecheck that Windows has taken back control of the wireless card.



### Blitzz Tech Support Center

24/7 Toll-free: 1-888-4Blitzz (1-888-425-4899)  
 Website: www.blitzzusa.com  
 Tech Support Email: support@blitzzusa.com